



Roxtec FlamePlus™ transit with extension

Lightweight fire rated transit with knock-out, for bolting

The Roxtec FlamePlus™ transit with extension is a multi-cable and pipe transit for bolted attachment. It's a composite frame with a wide flange to enable bolting onto concrete and bricks without risking cracks. The lightweight modular design, including a knock-out plate, not only makes it ideal for sandwich panels and simplifies logistics and handling it also ensures environmental protection until cable routing. The sealing modules adapt to cables and pipes of different sizes and can be used to provide spare capacity. Together with the extension attached to the backside it forms a complete fire rated installation.

- Light-weight
- Perfect for retrofit
- Tightness during building phase



Product characteristics



Fire rated



IP/UL NEMA

Structure of installation



Sandwich panel



Concrete



Brick

Mounting type



Bolting

Ratings & certificates

Fire

- E/EI rating according to EN 13501

Tightness

- IP 66

Frame dimensions

mm/kg

The frame variants below are a limited selection. For the full range of frames and configurations, please visit [roxtec.com](https://www.roxtec.com).

Product	Frame openings	Packing space	External dimensions WxHxD	Aperture dimensions w x h	Weight	Art. no
FLAMEPLUS 6x3 WITH EXT. FRAME	3	120 x 180	642 x 433 x 310		11.4	223807
FLAMEPLUS 6x2 WITH EXT. FRAME	2	120 x 180	487 x 433 x 310	351 x 297	8.4	223806
FLAMEPLUS 6x1 WITH EXT. FRAME	1	120 x 180	331 x 433 x 310		5.6	223805

Sealing components

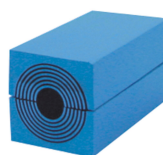
Sealing components



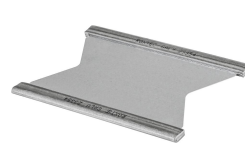
Lubricant



Wedge & Wedgekit



RM module with Multidiameter™



Stayplate



Sealing kit

For detailed information, please visit [roxtec.com](https://www.roxtec.com).



The product information provided by Roxtec does not release the purchaser of the Roxtec system, or part thereof, from the obligation to independently determine the suitability of the products for the intended process, installation and/or use.

Roxtec gives no guarantee for the Roxtec system or any part thereof and assumes no liability for any loss or damage whatsoever, whether direct, indirect, consequential, loss of profit or otherwise, occurred or caused by the Roxtec systems or installations containing components not manufactured by an authorized manufacturer and/or occurred or caused by the use of the Roxtec system in a manner or for an application other than for which the Roxtec system was designed or intended.

Roxtec expressly excludes any implied warranties of merchantability and fitness for a particular purpose and all other express or implied representations and warranties provided by statute or common law. User determines suitability of the Roxtec system for intended use and assumes all risk and liability in connection therewith. In no event shall Roxtec be liable for indirect, consequential, punitive, special, exemplary or incidental damages or losses.

The Roxtec products are offered and sold in accordance with the conditions of the Roxtec General Terms of Sales. The latest version of the Roxtec General Terms of Sales can be downloaded from <https://www.roxtec.com/en/about-us/about-roxtec/general-terms-of-sales/>

We reserve the right to make changes to the product and technical information without further notice. Any errors in print or entry are no claims for indemnity. The content of this publication is the property of Roxtec International AB and is protected by copyright.

This document was generated on: 2024-05-05